

# Sepsis Readmission Measure Submission to PQM: Figures and Tables

## Table of Figures

Figure 1: Distribution of Risk-standardized Readmission Rate (RSRR) Among Hospitals with 25 or more Admissions (January 1, 2022 – December 31, 2023) .....	2
Figure 2: Calibration Plot for Patients With and Without the DE Variable.....	6
Figure 3: Impact of DE status on Measure Scores.....	7
Figure 4: Distribution of Measure Scores Across Hospital Quartiles Based on the Proportion of Patients with DE status .....	7
Figure 5: Calibration Plots.....	13

## Table of Tables

Table 1. Sepsis Readmission: Distribution of Risk-standardized Readmission Rate (RSRR) Among Hospitals with $\geq 25$ admissions (January 1, 2022 – December 31, 2023) .....	2
Table 2. Sepsis Readmission: Performance Score (RSRR) by Deciles (January 1, 2022 – December 31, 2023).....	3
Table 3. Sepsis Readmission: Split-half Reliability (January 1, 2022 – December 31, 2023) .....	3
Table 4. Sepsis Readmission: Accountable Entity Level Reliability Estimate (January 1, 2022 – December 31, 2023).....	3
Table 5. Sepsis Readmission: List of Technical Expert Panel (TEP) Members .....	4
Table 6. Sepsis Readmission: TEP Face Validity Voting Results .....	5
Table 7. Sepsis Readmission: Association (Pearson Correlation Coefficients) between Sepsis Readmission Measure Scores and Component of the Overall Hospital Star Rating.....	5
Table 8. Sepsis Readmission: Distribution of Dual Eligibility in the Sepsis Readmission Cohort (January 1, 2022 – December 31, 2023).....	5
Table 9. Sepsis Readmission: Observed Sepsis Readmission Rate by Dual Eligibility Status (January 1, 2022 – December 31, 2023).....	5
Table 10. Sepsis Readmission: Estimated Odds Ratio (OR) and 95% Confidence Interval (CI) For DE (January 1, 2022 – December 31, 2023).....	6
Table 11. Sepsis Readmission: Frequency and Adjusted Odds Ratio and 95% Confidence Interval (CI) of ICD-10 Case Mix Risk Variables in the Sepsis Readmission Measure (January 1, 2022 – December 31, 2023).....	8
Table 12. Sepsis Readmission: Model Performance Testing Results .....	12

**Table 1. Sepsis Readmission: Distribution of Risk-standardized Readmission Rate (RSRR) Among Hospitals with  $\geq 25$  admissions (January 1, 2022 – December 31, 2023)**

Characteristics of Hospitals (Sepsis Risk-Standardized Readmission Rate [RSRR])	Value
Number of Hospitals	3,053
Number of Patients	1,315,690
Mean 30-day Readmission Rate	18.1%
Standard Deviation	1.3%
Minimum	12.9%
Lower Quartile	17.3%
Median 30-day Readmission Rate	18.0%
Upper Quartile	18.8%
Maximum	24.9%

**Figure 1: Sepsis Readmission: Distribution of Risk-standardized Readmission Rate (RSRR) Among Hospitals with 25 or more Admissions (January 1, 2022 – December 31, 2023)**

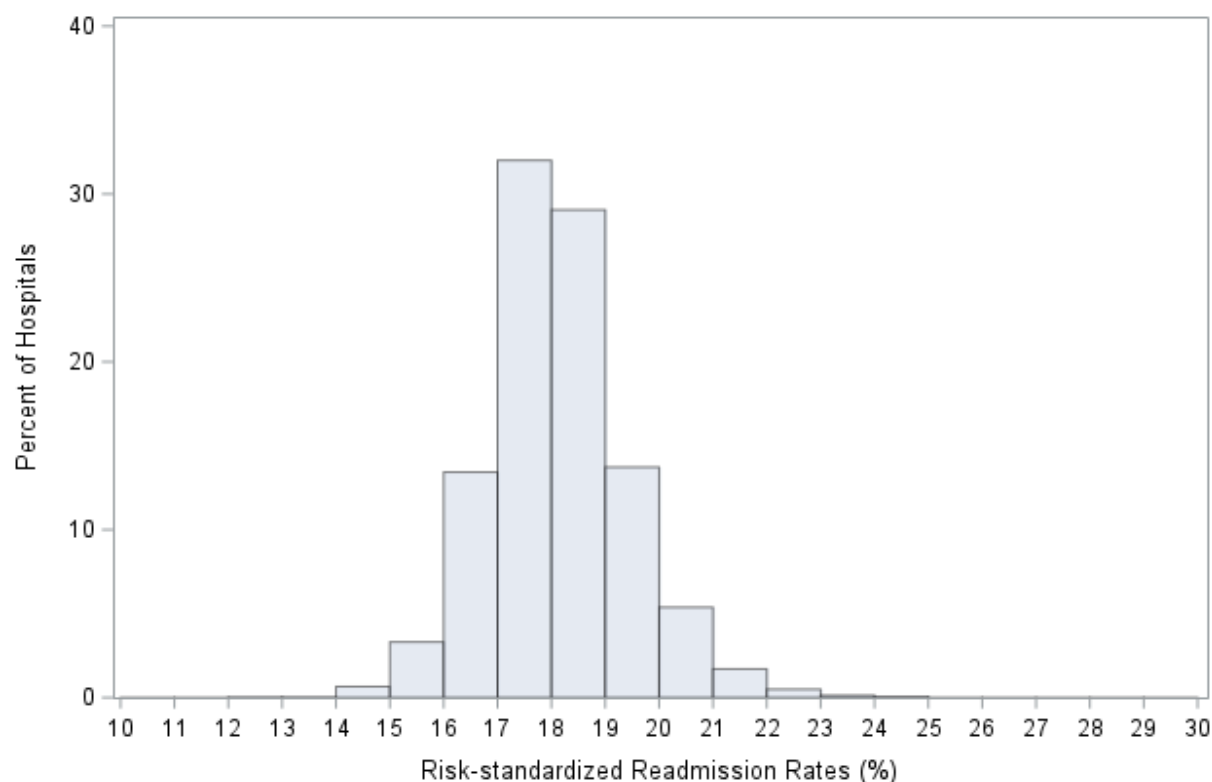


Table 2 shows the distribution of measure scores in deciles. Of note, we found that facilities in the top three deciles (worse performance) account for almost 570,776 readmissions (43%) that took place in facilities with worse-than-expected performance. We provide further evidence of variation by calculating and interpreting the median odds ratio. (Merlo et al., 2006) The median odds ratio, in this context, calculates the odds of the outcome (readmission) if the same patient

was treated at a higher-risk hospital compared with a lower-risk hospital. The median odds ratio for the Sepsis Readmission measure is 1.14. A value of 1.14 indicates that a patient has a 14 percent increase in the odds of readmission if they were initially admitted to a hospital for sepsis at a higher-risk facility compared to a lower-risk facility.

**Table 2. Sepsis Readmission: Performance Score (RSRR) by Deciles (January 1, 2022 – December 31, 2023)**

	Overall	Min	Decile 1	Decile 2	Decile 3	Decile 4	Decile 5	Decile 6	Decile 7	Decile 8	Decile 9	Decile 10	Max
Mean Performance Score	18.06	12.97	16.13	17.1	17.51	17.77	17.93	18.04	18.24	18.53	19.05	20.31	24.94
N of Entities	4,287	1	428	429	429	429	428	429	429	429	429	428	1
N of Persons / Encounters / Episodes	1,326,427	1,453	226,805	157,962	118,013	76,898	47,786	53,248	74,939	127,905	191,850	251,021	372

## References

Merlo J, Chaix B, Ohlsson H, et al. A brief conceptual tutorial of multilevel analysis in social epidemiology: using measures of clustering in multilevel logistic regression to investigate contextual phenomena. J Epidemiol Community Health. Apr 2006;60(4):290-7. doi:10.1136/jech.2004.029454

**Table 3. Sepsis Readmission: Split-half Reliability (January 1, 2022 – December 31, 2023)**

Minimum Case Volume	Number of Hospitals (%)	Number of Patients (%)	Split-half Reliability
>=2	4,287 (100)	1,326,427 (100)	0.6
>=25	3,053 (71.2)	1,315,690 (99.2)	0.6

Table 4 shows the accountable entity-level reliability results for hospitals with a minimum case of  $\geq 25$  cases (the proposed threshold for public reporting).

**Table 4. Sepsis Readmission: Accountable Entity Level Reliability Estimate (January 1, 2022 – December 31, 2023)**

	Overall	Min	Decile 1	Decile 2	Decile 3	Decile 4	Decile 5	Decile 6	Decile 7	Decile 8	Decile 9	Decile 10	Max
Mean Reliability	0.682	0.205	0.254	0.384	0.521	0.642	0.727	0.782	0.826	0.862	0.894	0.932	0.986
Mean Performance Score	18.085	18.107	17.944	17.984	17.939	18.037	18.064	18.155	18.074	18.177	18.264	18.21	20.756
N of Entities	<b>3,053</b>	21	312	296	309	305	306	302	308	305	306	304	1
N of Persons / Encounters / Episodes	<b>1,315,690</b>	525	10,421	18,064	33,027	53,529	79,658	105,855	142,821	186,672	253,832	431,811	6,769

69% of accountable entities met the split-half reliability score must be  $\geq 0.60$ .

**Table 5. Sepsis Readmission: List of Technical Expert Panel (TEP) Members**

<b>Name and Credentials</b>	<b>Organization (if applicable) and Role</b>	<b>Location</b>
Rosie Bartel, MA	PFA Network, PFCC Partners; Person Family Engagement Partner	Chilton, WI
David Classen, MD, MS	University of Utah School of Medicine, VA SLC, Pascal Metrics; Physician	Salt Lake City, UT
Steven Coffee, MA, EM CQSL	Headquarters U.S. Cyber Command, Patients for Patient Safety, U.S., Head2HeartConnections, LLC; Colonel, USAF Director, Military Personnel, Patient Advocate/Caregiver, Person Family Engagement Partner	Dumfries, VA
Sara Cosgrove, MD, MS	Johns Hopkins University School of Medicine; Professor of Medicine, Division of Infectious Disease	Baltimore, MD
Sarah Doernberg, MD, MAS	University of California, San Francisco	San Francisco, CA
Tom Ehelian	Person Family Engagement Partner	Dallas, TX
Stephen Goins, MS	New York State Department of Health; Research Scientist	New York, NY
Cindy Hou, DO, FIDSA	Sepsis Alliance; Chief Medical Officer, Person Family Engagement Partner	San Diego, CA
Michael, Klompas, MD, MPH	Brigham & Women's Hospital and Harvard Medical School; Physician	Boston, MA
Mitchell Levy, MD, MCCM	Brown University Health; Systemwide Director, Critical Care Medicine	Providence, RI
Hallie Prescott, MD, MSc	University of Michigan, Veterans Affairs Ann Arbor Healthcare System	Ann Arbor, MI
Chanu Rhee, MD, MPH, FIDSA, FSHEA	Brigham & Women's Hospital, Harvard Medical School and Harvard Pilgrim Health Care Institute; Associate Professor of Population Medicine and Medicine	Boston, MA
Maureen Seckel, APRN, MSN, ACSN-BC, CCNS, CCRN, FCNS, FCCM, FAAN	Christiana Care; Clinical Nurse Specialist	Newark, DE

Name and Credentials	Organization (if applicable) and Role	Location
Patient Advocate	Patient Advocate, Person Family Engagement Partner	Bonaire, GA

**Table 6. Sepsis Readmission: TEP Face Validity Voting Results**

Response Category	Number	Frequency
Strongly Agree	4	31%
Moderately Agree	4	31%
Somewhat Agree	4	31%
Somewhat Disagree	1	7%
Moderately Disagree	0	0%
Strongly Disagree	0	0%

**Table 7. Sepsis Readmission: Association (Pearson Correlation Coefficients) between Sepsis Readmission Measure Scores and Component of the Overall Hospital Star Rating**

Comparison Measures: Hospital Star Rating Standardized Scores	Number of Hospitals	Pearson Correlation Coefficient	P-value
Readmission Group Score	3,989	-0.35	<0.0001
Readmission Group Scores Excluding Hospital-Wide Readmission	3,743	-0.25	<0.0001
Summary Score	4,123	-0.17	<0.0001
Summary Score Excluding Readmission Group Score	4,123	-0.06	<0.0001
Patient Experience Group Score	2,990	-0.21	<0.0001

Dates of data: Sepsis Readmission, Jan 1, 2022-Dec 31, 2023; Star Rating data from 2025 release on Care Compare with measure dates of data ranging from 7/2020 – 12/2023.

**Table 8. Sepsis Readmission: Distribution of Dual Eligibility in the Sepsis Readmission Cohort (January 1, 2022 – December 31, 2023)**

Number of Hospitals	Median Hospital-Level Percentage of Dual-Eligible Patients (DE) (IQR)
4,258	21.05 (14.07 - 31.16)

**Table 9. Sepsis Readmission: Observed Sepsis Readmission Rate by Dual Eligibility Status (January 1, 2022 – December 31, 2023)**

Variable	Number of Patients (%)	Observed Readmission
----------	------------------------	----------------------

		Rate (%)
Dual Eligible	293,534 (23.42)	20.74
Non- Dual Eligible	959,703 (76.58)	17.23

**Table 10. Sepsis Readmission: Estimated Odds Ratio (OR) and 95% Confidence Interval (CI) For DE (January 1, 2022 – December 31, 2023)**

Dual Eligibility Status	Odd Ratios
DE	1.083 (1.071 - 1.095)

**Figure 2. Sepsis Readmission: Calibration Plot for Patients in the Model With and Without the DE Variable**

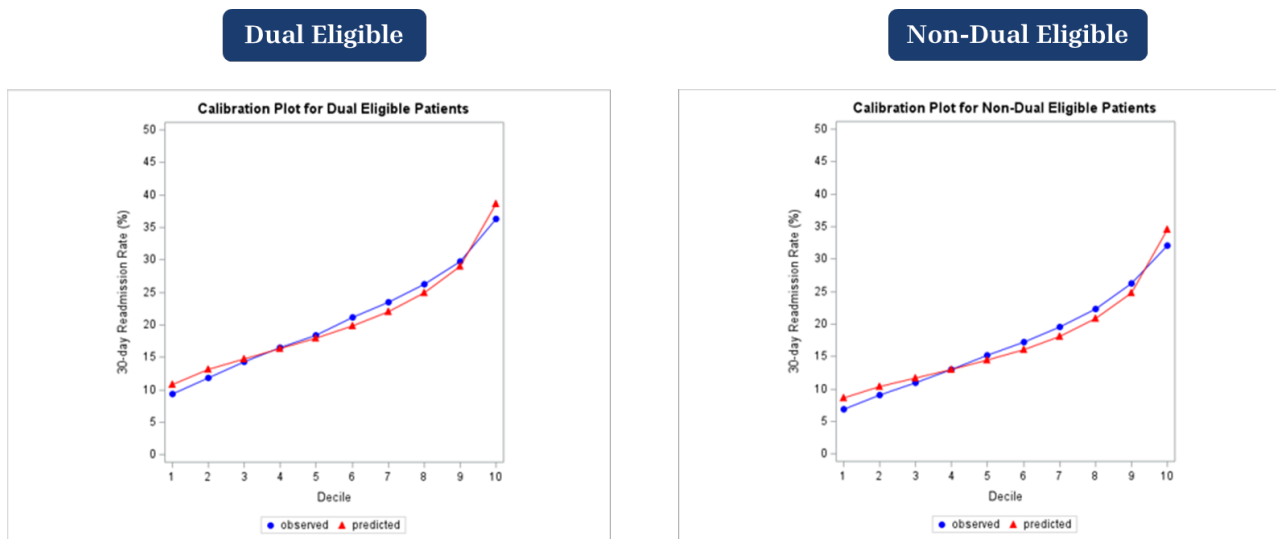


Figure 3. Sepsis Readmission: Impact of DE status on Measure Scores

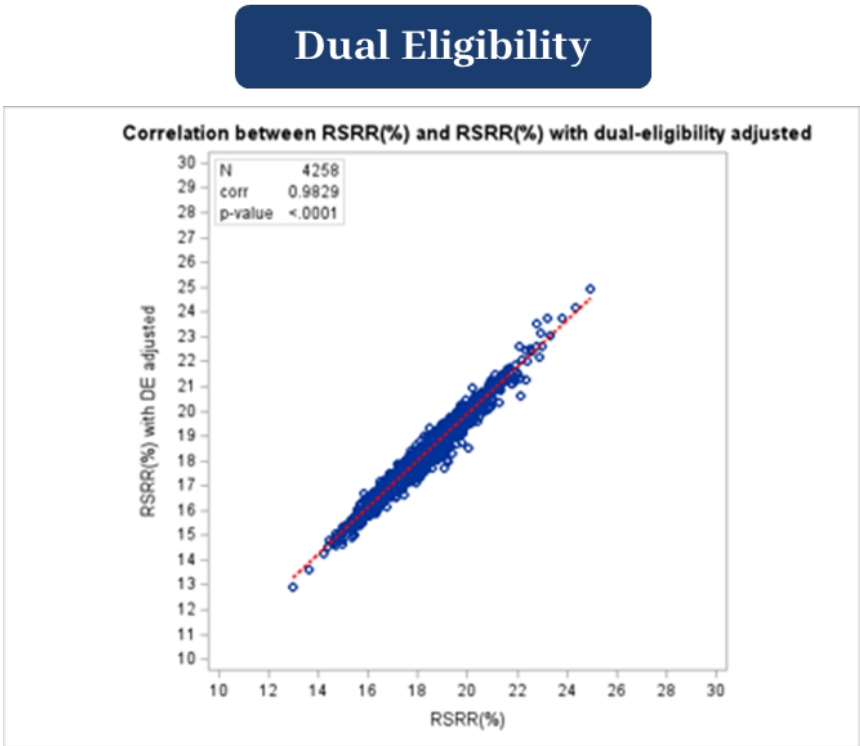
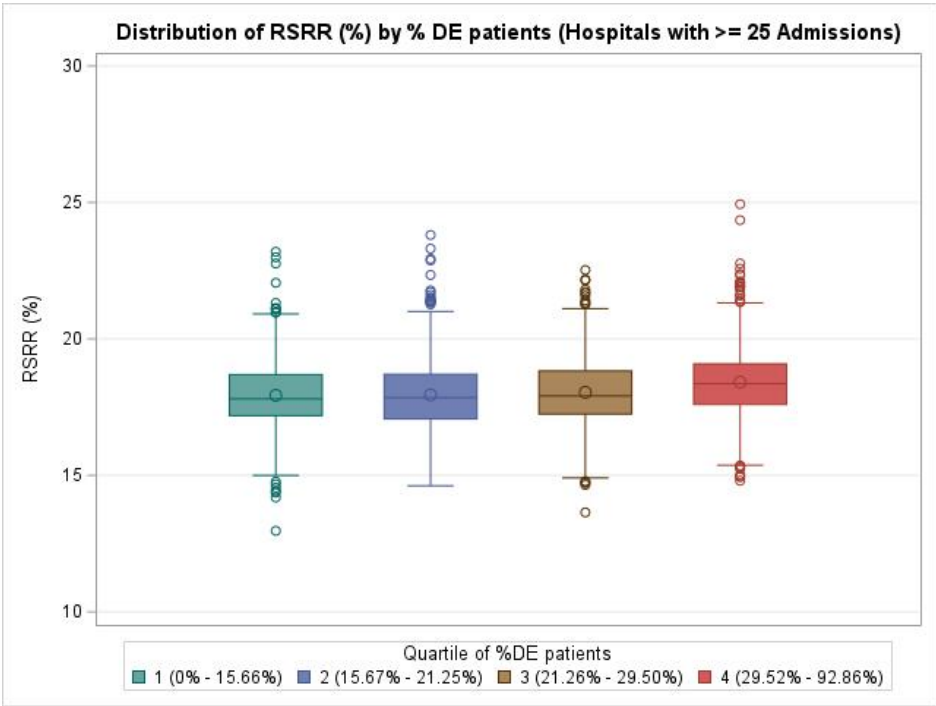


Figure 4. Sepsis Readmission: Distribution of Measure Scores Across Hospital Quartiles Based on the Proportion of Patients with DE status



**Table 11. Sepsis Readmission: Frequency and Adjusted Odds Ratio and 95% Confidence Interval (CI) of ICD-10 Case Mix Risk Variables in the Sepsis Readmission Measure (January 1, 2022 – December 32, 2023)**

Variable	Description	Frequency (%) (N=1,326,427)	OR (95% CI)
AGE	Age, mean (SD)	77.35 (7.88)	1 (1, 1)
ICD-10 codes at the index admission			
A0472	Enterocolitis due to Clostridium difficile, not specified as recurrent	2.66	1.31 (1.28, 1.34)
B370	Candidal stomatitis	1.08	1.14 (1.09, 1.18)
B3749	Other urogenital candidiasis	0.70	1.28 (1.22, 1.34)
B952	Enterococcus as the cause of diseases classified elsewhere	1.78	1.16 (1.12, 1.2)
B9620	Unspecified Escherichia coli [E. coli] as the cause of diseases classified elsewhere	7.14	0.91 (0.9, 0.93)
B965	Pseudomonas (aeruginosa) (mallei) (pseudomallei) as the cause of diseases classified elsewhere	1.31	1.15 (1.1, 1.19)
C3490	Malignant neoplasm of unspecified part of unspecified bronchus or lung	0.64	1.22 (1.16, 1.28)
C679	Malignant neoplasm of bladder, unspecified	0.72	1.32 (1.25, 1.39)
C787	Secondary malignant neoplasm of liver and intrahepatic bile duct	1.17	1.57 (1.51, 1.63)
C7951	Secondary malignant neoplasm of bone	1.32	1.29 (1.25, 1.34)
D500	Iron deficiency anemia secondary to blood loss (chronic)	0.77	1.14 (1.12, 1.16)
D509	Iron deficiency anemia, unspecified	6.15	1.14 (1.11, 1.18)
D539	Nutritional anemia, unspecified	1.95	1.21 (1.16, 1.27)
D61810	Antineoplastic chemotherapy induced pancytopenia	0.98	1.32 (1.28, 1.35)
D61818	Other pancytopenia	2.02	1.21 (1.19, 1.23)
D62	Acute posthemorrhagic anemia	5.67	1.36 (1.31, 1.42)
D630	Anemia in neoplastic disease	1.07	1.15 (1.13, 1.17)
D631	Anemia in chronic kidney disease	7.52	1.2 (1.18, 1.22)
D638	Anemia in other chronic diseases classified elsewhere	4.54	1.13 (1.12, 1.15)
D649	Anemia, unspecified	13.59	1.22 (1.16, 1.28)
D709	Neutropenia, unspecified	0.87	1.12 (1.07, 1.17)
D849	Immunodeficiency, unspecified	2.24	1.11 (1.07, 1.14)
E1152	Type 2 diabetes mellitus with diabetic peripheral angiopathy with gangrene	1.64	1.2 (1.16, 1.24)
E11649	Type 2 diabetes mellitus with hypoglycemia without coma	2.85	1.07 (1.05, 1.1)
E119	Type 2 diabetes mellitus without complications	10.73	1.09 (1.07, 1.11)
E162	Hypoglycemia, unspecified	1.00	1.19 (1.14, 1.24)
E222	Syndrome of inappropriate secretion of antidiuretic hormone	0.87	1.19 (1.14, 1.24)
E2740	Unspecified adrenocortical insufficiency	0.86	1.22 (1.17, 1.28)
E43	Unspecified severe protein-calorie malnutrition	7.23	1.31 (1.29, 1.33)
E440	Moderate protein-calorie malnutrition	4.27	1.26 (1.23, 1.29)
E441	Mild protein-calorie malnutrition	0.77	1.2 (1.14, 1.26)



Variable	Description	Frequency (%) (N=1,326,427)	OR (95% CI)
E46	Unspecified protein-calorie malnutrition	2.28	1.17 (1.14, 1.21)
E669	Obesity, unspecified	10.38	0.93 (0.92, 0.95)
E785	Hyperlipidemia, unspecified	43.43	0.97 (0.96, 0.98)
E8352	Hypercalcemia	1.27	1.17 (1.13, 1.22)
E870	Hyperosmolality and hyponatremia	7.07	1.11 (1.1, 1.13)
E871	Hypo-osmolality and hyponatremia	21.42	1.09 (1.07, 1.1)
E8720	Acidosis, unspecified	18.21	1.03 (1.01, 1.04)
E875	Hyperkalemia	7.60	1.16 (1.14, 1.17)
E8770	Fluid overload, unspecified	1.71	1.1 (1.06, 1.14)
E8809	Other disorders of plasma-protein metabolism, not elsewhere classified	3.11	1.14 (1.11, 1.17)
G40909	Epilepsy, unspecified, not intractable, without status epilepticus	3.35	1.11 (1.09, 1.14)
G4733	Obstructive sleep apnea (adult) (pediatric)	9.74	0.95 (0.94, 0.97)
G894	Chronic pain syndrome	1.67	1.15 (1.11, 1.19)
G928	Other toxic encephalopathy	6.06	1.14 (1.12, 1.16)
G9340	Encephalopathy, unspecified	2.17	1.13 (1.1, 1.17)
G9341	Metabolic encephalopathy	22.30	1.13 (1.12, 1.14)
I10	Essential (primary) hypertension	35.87	0.94 (0.93, 0.95)
I110	Hypertensive heart disease with heart failure	13.22	1.09 (1.07, 1.11)
I120	Hypertensive chronic kidney disease with stage 5 chronic kidney disease or end stage renal disease	1.66	1.18 (1.13, 1.23)
I130	Hypertensive heart and chronic kidney disease with heart failure and stage 1 through stage 4 chronic kidney disease, or unspecified chronic kidney disease	13.08	1.16 (1.14, 1.18)
I132	Hypertensive heart and chronic kidney disease with heart failure and with stage 5 chronic kidney disease, or end stage renal disease	2.14	1.28 (1.23, 1.33)
I2510	Atherosclerotic heart disease of native coronary artery without angina pectoris	25.93	1.06 (1.05, 1.07)
I2699	Other pulmonary embolism without acute cor pulmonale	1.02	1.16 (1.11, 1.21)
I3139	Other pericardial effusion (noninflammatory)	0.66	1.22 (1.16, 1.28)
I330	Acute and subacute infective endocarditis	0.59	1.39 (1.32, 1.47)
I350	Nonrheumatic aortic (valve) stenosis	2.58	1.11 (1.08, 1.14)
I471	Supraventricular tachycardia	2.41	1.07 (1.04, 1.1)
I480	Paroxysmal atrial fibrillation	13.07	1.14 (1.13, 1.16)
I4819	Other persistent atrial fibrillation	2.09	1.16 (1.12, 1.19)
I4820	Chronic atrial fibrillation, unspecified	4.63	1.15 (1.12, 1.17)
I4821	Permanent atrial fibrillation	1.64	1.15 (1.12, 1.19)
I4891	Unspecified atrial fibrillation	10.56	1.14 (1.12, 1.16)
I4892	Unspecified atrial flutter	2.94	1.07 (1.04, 1.09)
I5022	Chronic systolic (congestive) heart failure	4.29	1.04 (1.02, 1.07)
I5023	Acute on chronic systolic (congestive) heart failure	2.14	1.2 (1.17, 1.24)

Variable	Description	Frequency (%) (N=1,326,427)	OR (95% CI)
I5033	Acute on chronic diastolic (congestive) heart failure	4.42	1.11 (1.08, 1.13)
I5043	Acute on chronic combined systolic (congestive) and diastolic (congestive) heart failure	1.50	1.17 (1.13, 1.21)
I739	Peripheral vascular disease, unspecified	3.27	1.1 (1.08, 1.13)
I9589	Other hypotension	0.75	1.1 (1.05, 1.16)
I959	Hypotension, unspecified	6.44	1.06 (1.04, 1.08)
J101	Influenza due to other identified influenza virus with other respiratory manifestations	0.89	0.77 (0.73, 0.82)
J441	Chronic obstructive pulmonary disease with (acute) exacerbation	5.54	1.12 (1.1, 1.14)
J449	Chronic obstructive pulmonary disease, unspecified	10.74	1.1 (1.08, 1.11)
J90	Pleural effusion, not elsewhere classified	3.72	1.18 (1.15, 1.21)
J918	Pleural effusion in other conditions classified elsewhere	0.88	1.15 (1.1, 1.2)
J9602	Acute respiratory failure with hypercapnia	2.24	1.09 (1.06, 1.12)
J9611	Chronic respiratory failure with hypoxia	2.19	1.12 (1.08, 1.15)
J9621	Acute and chronic respiratory failure with hypoxia	6.91	1.15 (1.13, 1.18)
J9622	Acute and chronic respiratory failure with hypercapnia	2.59	1.09 (1.06, 1.12)
K2970	Gastritis, unspecified, without bleeding	0.96	1.14 (1.09, 1.19)
K5720	Diverticulitis of large intestine with perforation and abscess without bleeding	1.06	1.31 (1.25, 1.36)
K651	Peritoneal abscess	1.04	1.15 (1.1, 1.2)
K7460	Unspecified cirrhosis of liver	2.10	1.17 (1.13, 1.21)
K7581	Nonalcoholic steatohepatitis (NASH)	0.59	1.18 (1.11, 1.24)
K766	Portal hypertension	0.89	1.38 (1.32, 1.45)
K82A1	Gangrene of gallbladder in cholecystitis	0.59	0.82 (0.77, 0.88)
K8309	Other cholangitis	0.95	1.19 (1.13, 1.25)
K831	Obstruction of bile duct	0.58	1.65 (1.56, 1.75)
L03116	Cellulitis of left lower limb	5.38	1.06 (1.04, 1.08)
L89150	Pressure ulcer of sacral region, unstageable	0.57	1.26 (1.2, 1.33)
L89152	Pressure ulcer of sacral region, stage 2	1.29	1.19 (1.15, 1.23)
L89153	Pressure ulcer of sacral region, stage 3	1.05	1.22 (1.18, 1.27)
L89154	Pressure ulcer of sacral region, stage 4	1.66	1.2 (1.17, 1.24)
L89159	Pressure ulcer of sacral region, unspecified stage	0.65	1.18 (1.12, 1.24)
M069	Rheumatoid arthritis, unspecified	2.85	1.09 (1.06, 1.12)
N10	Acute pyelonephritis	2.37	0.81 (0.78, 0.84)
N12	Tubulo-interstitial nephritis, not specified as acute or chronic	2.60	0.85 (0.82, 0.87)
N1330	Unspecified hydronephrosis	0.92	1.15 (1.1, 1.21)
N170	Acute kidney failure with tubular necrosis	7.25	1.12 (1.1, 1.14)
N179	Acute kidney failure, unspecified	41.75	1.08 (1.07, 1.09)
N1832	Chronic kidney disease, stage 3b	3.98	1.07 (1.05, 1.1)
N400	Benign prostatic hyperplasia without lower urinary tract symptoms	9.07	0.94 (0.93, 0.96)

Variable	Description	Frequency (%) (N=1,326,427)	OR (95% CI)
R0902	Hypoxemia	3.08	0.95 (0.92, 0.98)
R1310	Dysphagia, unspecified	4.05	1.13 (1.11, 1.16)
R1312	Dysphagia, oropharyngeal phase	1.04	1.17 (1.12, 1.22)
R188	Other ascites	2.01	1.31 (1.27, 1.35)
R339	Retention of urine, unspecified	3.12	1.12 (1.09, 1.15)
R627	Adult failure to thrive	2.66	1.12 (1.09, 1.15)
R6521	Severe sepsis with septic shock	21.37	1.09 (1.07, 1.1)
R739	Hyperglycemia, unspecified	2.04	0.91 (0.88, 0.95)
T451X5A	Adverse effect of antineoplastic and immunosuppressive drugs, initial encounter	1.65	1.24 (1.2, 1.29)
TX	Transplant recipient indicator	0.88	1.15 (1.09, 1.2)
Z1612	Extended spectrum beta lactamase (ESBL) resistance	2.68	1.28 (1.25, 1.32)
Z1624	Resistance to multiple antibiotics	1.56	1.18 (1.14, 1.22)
Z515	Encounter for palliative care	4.10	0.86 (0.84, 0.88)
Z7401	Bed confinement status	2.40	1.14 (1.1, 1.17)
Z7952	Long term (current) use of systemic steroids	2.17	1.17 (1.14, 1.21)
Z7984	Long term (current) use of oral hypoglycemic drugs	11.88	0.89 (0.88, 0.91)
Z79899	Other long term (current) drug therapy	24.00	0.96 (0.95, 0.97)
Z8249	Family history of ischemic heart disease and other diseases of the circulatory system	3.47	0.93 (0.9, 0.95)
Z86711	Personal history of pulmonary embolism	2.80	1.11 (1.08, 1.14)
Z86718	Personal history of other venous thrombosis and embolism	4.03	1.1 (1.07, 1.12)
Z8701	Personal history of pneumonia (recurrent)	1.03	1.13 (1.08, 1.18)
Z91199	Patient's noncompliance with other medical treatment and regimen due to unspecified reason	0.6	1.12 (1.06, 1.18)
Z9221	Personal history of antineoplastic chemotherapy	1.80	1.21 (1.17, 1.25)
Z930	Tracheostomy status	0.54	1.18 (1.12, 1.25)
Z931	Gastrostomy status	1.36	1.41 (1.36, 1.47)
Z933	Colostomy status	1.01	1.26 (1.21, 1.31)
Z952	Presence of prosthetic heart valve	1.54	1.08 (1.04, 1.12)
Z95828	Presence of other vascular implants and grafts	0.80	1.16 (1.11, 1.21)
Z9981	Dependence on supplemental oxygen	3.83	1.08 (1.05, 1.11)
ICD-10 codes in the 12 months prior to admission			
A419	Sepsis, unspecified organism	21.90	0.94 (0.92, 0.95)
D649	Anemia, unspecified	12.13	1.10 (1.09, 1.12)
D72829	Elevated white blood cell count, unspecified	5.75	1.11 (1.08, 1.13)
E11649	Type 2 diabetes mellitus with hypoglycemia without coma	3.81	1.14 (1.12, 1.17)
E1165	Type 2 diabetes mellitus with hyperglycemia	15.98	1.07 (1.05, 1.09)
J90	Pleural effusion, not elsewhere classified	6.40	1.12 (1.1, 1.14)

Variable	Description	Frequency (%) (N=1,326,427)	OR (95% CI)
R079	Chest pain, unspecified	10.66	1.1 (1.08, 1.12)
R109	Unspecified abdominal pain	7.97	1.09 (1.07, 1.11)
R509	Fever, unspecified	7.28	0.95 (0.94, 0.97)
Z66	Do not resuscitate	3.74	0.99 (0.97, 1.01)
Z87440	Personal history of urinary (tract) infections	2.56	1.18 (1.15, 1.21)
ICD-10 codes either during the index admission or 12 months prior to admission			
E1122	Type 2 diabetes mellitus with diabetic chronic kidney disease	22.01	0.96 (0.94, 0.98)
N184	Chronic kidney disease, stage 4 (severe)	6.22	1.13 (1.11, 1.15)
N186_Z992	Combined End stage renal disease and Dependence on renal dialysis	4.71	1.19 (1.15, 1.23)
ICD-10 codes during the index admission (principal diagnosis)			
A4151	Sepsis due to Escherichia coli [E. coli]	12.32	0.79 (0.77, 0.83)
A4181	Sepsis due to Enterococcus	1.70	1.19 (1.14, 1.25)
A4150	Gram-negative sepsis, unspecified	4.47	0.9 (0.86, 0.95)
A4159	Other Gram-negative sepsis	1.62	0.95 (0.91, 0.99)
A413	Sepsis due to Hemophilus influenzae	0.14	0.63 (0.55, 0.73)
A4189	Other specified sepsis	3.44	0.89 (0.85, 0.93)
A4152	Sepsis due to Pseudomonas	1.32	1.14 (1.08, 1.2)
A021	Salmonella sepsis	0.11	0.75 (0.64, 0.88)
SEP_STAPH	Sepsis due to Staphylococcus aureus	4.09	1.11 (1.06, 1.15)
SEP_STREP	Sepsis due to Streptococcus	3.39	0.8 (0.77, 0.84)
A419	Sepsis, unspecified organism	65.54	0.98 (0.95, 1.02)
Other risk variables			
MA	MA (versus FFS)	49.00	0.98 (0.97, 0.99)
MCCFI	Multiple Chronic Conditions Frailty Index	33.47	1.24 (1.22, 1.25)

**Table 12. Sepsis Readmission: Model Performance Testing Results**

Sample (# Admissions)	C-Statistic	Predictive Ability (%)	Overfitting ( $\gamma_0$ , $\gamma_1$ )
Development (664,329)	0.65	7.30 – 33.50	0.00, 1.00
Validation (662,099)	0.65	7.38 – 33.13	-0.04, 0.98

Figure 5: Sepsis Readmission: Calibration Plots for Development and Validation Samples

